

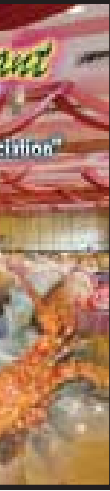


**Little Italy**  
Pasta & Pizza Corner

DELICIOUS PASTA DISHES,  
SUPERB STONE BAKED PIZZAS

Great Italian Hospitality

DOWN TOWN:  
23 Jalan Haji Saman,  
Ground Floor (Hotel Capital)  
88613 Kota Kinabalu, Sabah.  
Tel: 088-232 231



**金の島**

Disawa Island Resort & Spa  
No. 5, Jalan Daga, Tanjung Upat,  
88000 Kota Kinabalu, Sabah,  
East Malaysia  
Tel: +6 088 281 288  
Fax: +6 088 288 811  
Email: disawa\_island@phos.com

\*Two island one lagoon\*  
\*Marine conservation park\*  
\*25 minutes away from Suters Jetty\*



**TRAVEL GUIDE**

COVER  
Wonders of  
Borneo

This map is endorsed and supported by:

sabahtourism.com

Sabah Tourism Board  
www.sabahtourism.com

Sabah Chapter of:  
Malaysia Association of  
Tours and Travel Agents  
www.mattasabah.com

Sabah's First Established Paper

The way to get yourself discovered

For advertising enquiries,  
Call 088-230055 (New Sabah Times)  
019-840 2911 (William Sabah Travel)

# Sights of Sabah

There are many sights of Sabah, this beautiful State of ours that should be shared with our visitors. There is the flora and fauna, the sea sand and sun. The sunsets are spectacular; the sunrise awesome...even the slate grey sky inspires poets. These are some sights of Sabah that was caught by New Sabah Times' lens recently.

